

Elima-Matic Pumps

Air-Operated Double Diaphragm Pumps



- ▶ Plastic Pumps
- ▶ Metallic Pumps
- ▶ Specialty Pumps
- ▶ Accessories
- ▶ Diaphragms





Elima-Matic® Pumps

A complete line of pumps that eliminate stalling, icing, lubing — and now blow-by

REVOLUTIONARY TECHNOLOGY

Versa-Matic® continues to redefine the standard of performance in AODD pumps. The next generation in Elima-Matic® technology now includes a **Shoe-Valve design**. That means in addition to **non-stalling, non-icing, lube-free** operation, Elima-Matic pumps also **avoid blow-by** when the pump is on line but not in use. And the Shoe-Valve can be retrofitted to all original Elima-Matic pumps. True to their name, Elima-Matic pumps virtually eliminate pumping problems to keep your operations running smoothly.

RELIABLE PERFORMANCE

Elima-Matic pumps are designed to **reduce downtime** by ensuring continuous, reliable pump performance. In addition to eliminating freezing and stalling, they are **self-priming**, can handle infinite variable flows up to **90% solids**, and are capable of operating as low as **one stroke per minute**. You'll find our pumps also simplify your maintenance efforts: There's no need for an o-ring tool and the air valve can be accessed without taking the center section apart.

Elima-Matic® technology is available in upgrade kits for Wilden® 1-1/2", 2" and 3" clamp band pumps.

VERSATILE SOLUTIONS

Elima-Matic® pumps are available in a range of plastic and metal materials, in a variety of sizes and with specialty features to meet the needs of specific applications.

Clamped Design

The original AODD design. Provides proven reliability and quick tear-down for repairs.



Bolted Design

Offers a leak-free design for a greater positive seal. Provides the ability to transfer chemicals safely and confidently.



Side Discharge

Prevents fluid from leaking onto the pump's center section and causing corrosion when pumping chemicals.



High Pressure

Used for applications that require up to 200 PSI discharge. The pump provides a 2:1 ratio of discharge-to-inlet pressure.



Split Manifold

Enables one pump to do the job of two separate pumps, offering great cost savings. Flow is directed out of each side using separate manifold discharge elbows instead of one center discharge port.



Groundable Acetal

Allows safe transfer of liquids without the danger of static electricity build-up. The pump passes both the VAN deGRAAF Generator Test and the Unrestricted Flow Test.



Food Processing

Transfers even the most sensitive foods hygienically and without shearing. Also handles abrasive and viscous media solids economically.



Sanitary

Meets stringent 3A sanitary standards. Made of 316 stainless steel with a 32 micro-inch finish on both internal and external surfaces.



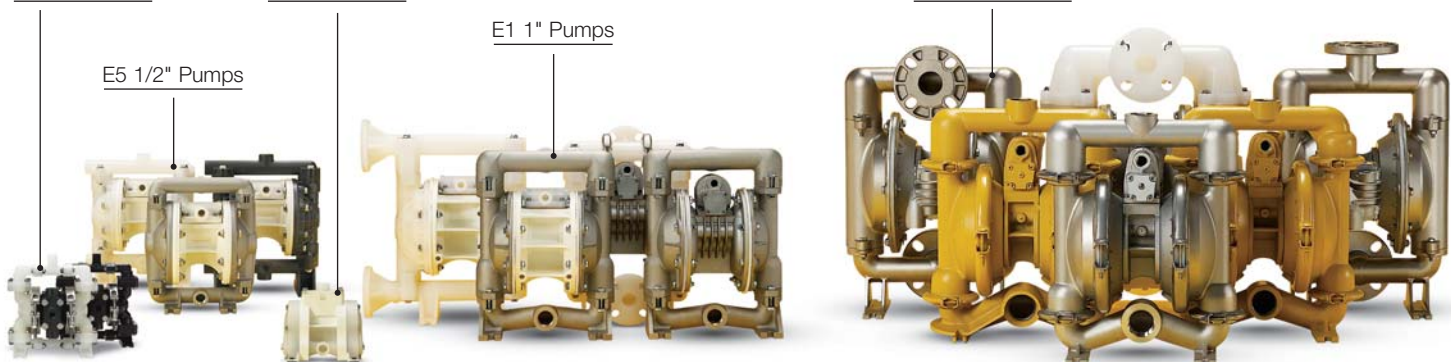
E6 1/4" Pumps

E8 3/8" Pumps

E1 1" Pumps

E4 1-1/2" Pumps

E5 1/2" Pumps



Screen Mounted

Pumps mediums containing large solids and can handle semi-solids up to .375" in diameter. The screen-mounted base filters the fluid to prevent larger solids from inhibiting the operation of the pump.



Flap Valve

Handles line-size solids up to 1.125" in diameter without buildup. Gravity gently moves material through the flap valves to avoid degradation.



Certified ATEX Compliant

A complete line of independently certified ATEX compliant AODD pumps. Includes an industry first range of easily distinguishable black polypropylene pumps. Available with a wide range of diaphragm choices to ensure the best compatibility for products pumped in volatile environments.



Elima-Matic® Plastic Pump Materials of Construction

	E6 1/4"	E8 3/8"	E5 1/2"	E1 1"	E4 1-1/2"	E2 2"	E3 3"
Clamped Design	●●●						
Bolted Design		●●	●●●	●●	●●	●●	●●
Split Manifold			●●	●●			
Side Discharge			●●		●●		
Groundable Acetal	●		●				
ATEX Compliant			●	●	●	●	

● Polypropylene ● PVDF Kynar® ● Acetal

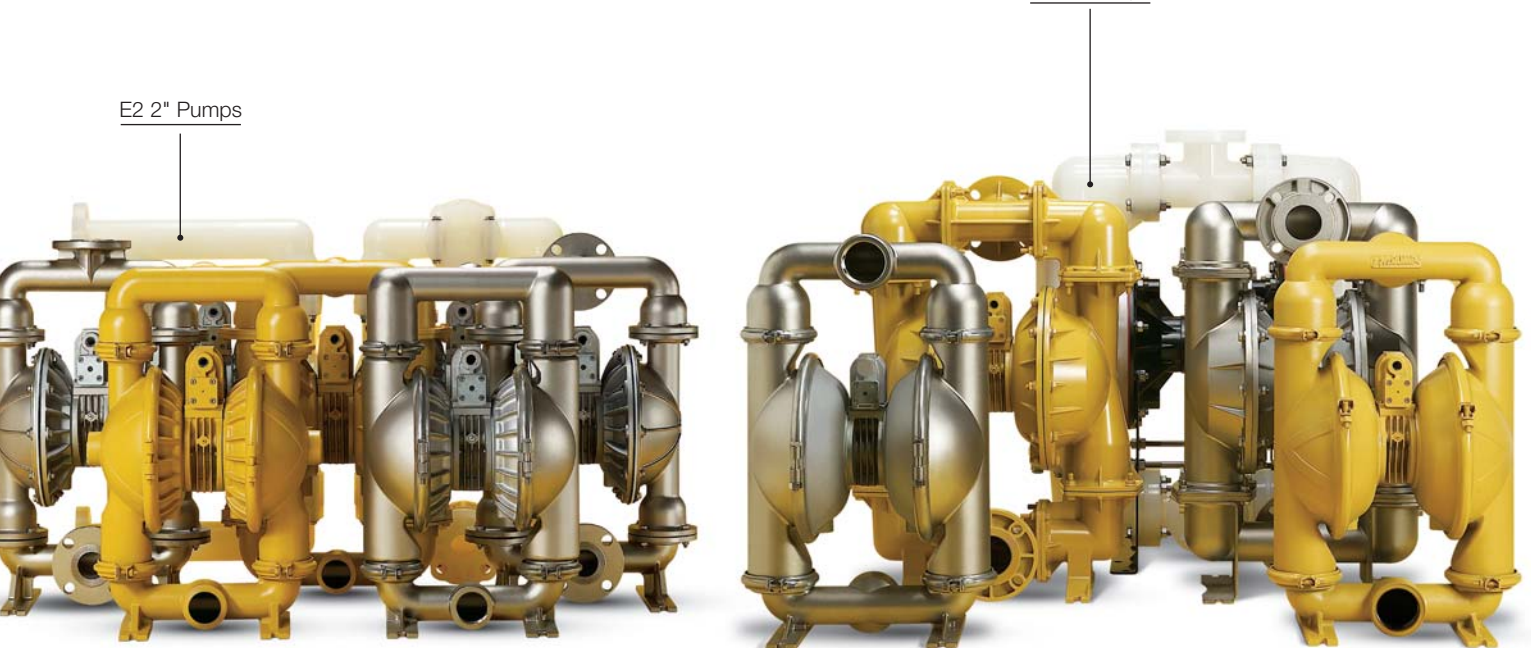
Elima-Matic® Metallic Pump Materials of Construction

	E5 1/2"	E1 1"	E4 1-1/2"	E2 2"	E3 3"
Clamped Design			●●●●	●●●●	●●●●
Bolted Design	●●●	●●●	●●	●●●●	●●●
Split Manifold				●	
Food Processing		●	●	●	●
Sanitary			●	●	
Flap Valve				●	
Screen Mounted			●	●	●
High Pressure				●	
ATEX Compliant	●●●	●●●	●●●●	●●●●	●●●●

● Aluminum ● Cast Iron ● Hastelloy C ● Stainless Steel

E2 2" Pumps

E3 3" Pumps



Versa-Matic's product line includes a variety of pump accessories to enhance your pump performance:

Surge Suppressors

Our surge suppressors provide virtually pulse-free discharge flow, for steadier pressure and less system vibration and noise. Self-charging and self-venting.



Pail and Drum Transfer Kits

These adapter kits easily connect 1/4", 1/2" or 3/4" plastic pumps to a 5-gallon bucket, 120 lb. barrel or 55-gallon drum for a cleaner application.



Versa-Sense™ Leak Detector

Protects product from contamination in the event of a diaphragm failure. Compared to competitor models, Versa-Sense has a much broader sensing range and can be used with confidence on a wider variety of mediums.



Filter/Regulator/Lubricators

FRLs improve pump performance and reduce maintenance costs. Used to filter particles and water out of the compressed air coming into the pump, as well as control the air pressure. Also controls lubrication amounts to optimize pump performance.



Versa-Matic offers the most extensive line of diaphragms in the industry, including:

Versa-Rugged VR™ Diaphragms

Our standard rubber diaphragms are reinforced with high-quality fabric and designed to reduce maintenance and repair costs. They are interchangeable with most Wilden® pump models.



Versa-Dome® Diaphragms

An industry first, Versa-Dome's simple, smooth dome shape delivers flex across the entire face of the diaphragm to provide three times the life of standard diaphragms. They are interchangeable with most Wilden® 2" & 3" pump models.



FDA Hytel® Thermoplastic Diaphragms

Approved for use with food and dairy mediums, FDA Hytel diaphragms are also excellent for abrasive product transfer.



TPE-XL Thermoplastic Diaphragms

Versa-Matic's innovative thermoplastic diaphragms have much of the chemical resistance of Teflon® but cost significantly less. They are extremely resistant to abrasion and are interchangeable with most Wilden® pump models.



Versa-Tuff® Teflon® Diaphragms

These single-piece diaphragms combine the chemical resistance of Teflon® with the flex-life of rubber to offer three times the burst strength of standard Teflon® overlays. They have been tested to over 23 million cycles without failure and are interchangeable with most Wilden® 1-1/4", 2" and 3" metallic pumps.



Hytel® and Teflon® are registered trademarks of DuPont. Kynar® is a registered trademark of Penwalt Corp. Wilden® is a registered trade name of Wilden Pump and Engineering Company, a Dover Resources Company.

Elima-Matic®, Versa-Dome®, Versa-Matic®, Versa-Tuff® and Versa-Rugged VR™ are registered tradenames and trademarks of IDEX Corporation.



VERSA-MATIC® PUMP COMPANY

A Unit of IDEX Corporation
6017 Enterprise Drive
Export, PA 15632-8969

(724) 327-7867

Fax: (724) 327-4300

www.versamatic.com



©2006 IDEX Corporation

POMP DIRECT

T 0294-457712 F 0294-457713 info@pompdirect.nl

VMEM-0406-15M